

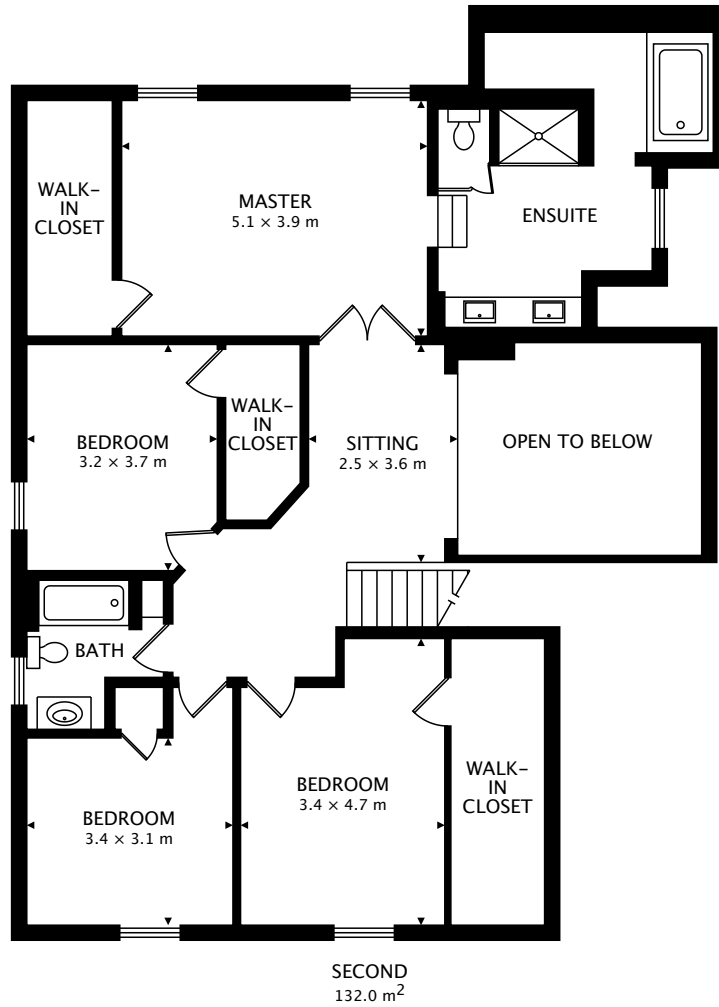
MAIN
161.3 m²

TOTAL
293.3 m² + 150.5 m² BELOW GRADE



CAPTURED ON: 8 MAR 2018

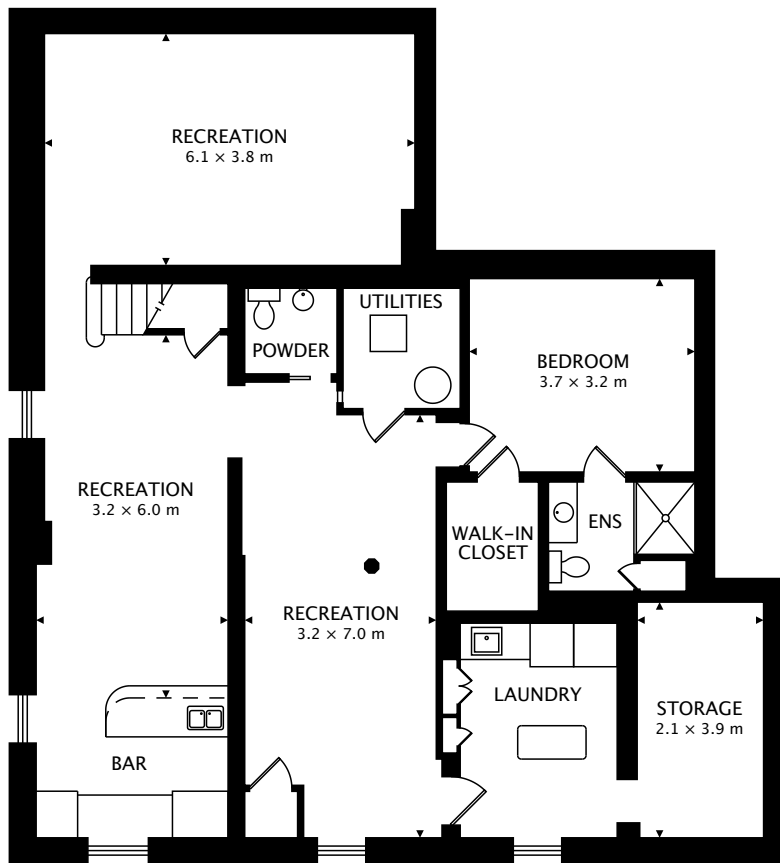
DIMENSIONS, AREAS, LAYOUTS AND DETAILS ARE APPROXIMATE
AND SHOULD BE CONSIDERED ILLUSTRATIVE ONLY.



TOTAL
293.3 m² + 150.5 m² BELOW GRADE



CAPTURED ON: 8 MAR 2018
DIMENSIONS, AREAS, LAYOUTS AND DETAILS ARE APPROXIMATE
AND SHOULD BE CONSIDERED ILLUSTRATIVE ONLY.



LOWER
150.5 m² BELOW GRADE

TOTAL
293.3 m² + 150.5 m² BELOW GRADE



CAPTURED ON: 8 MAR 2018
DIMENSIONS, AREAS, LAYOUTS AND DETAILS ARE APPROXIMATE
AND SHOULD BE CONSIDERED ILLUSTRATIVE ONLY.