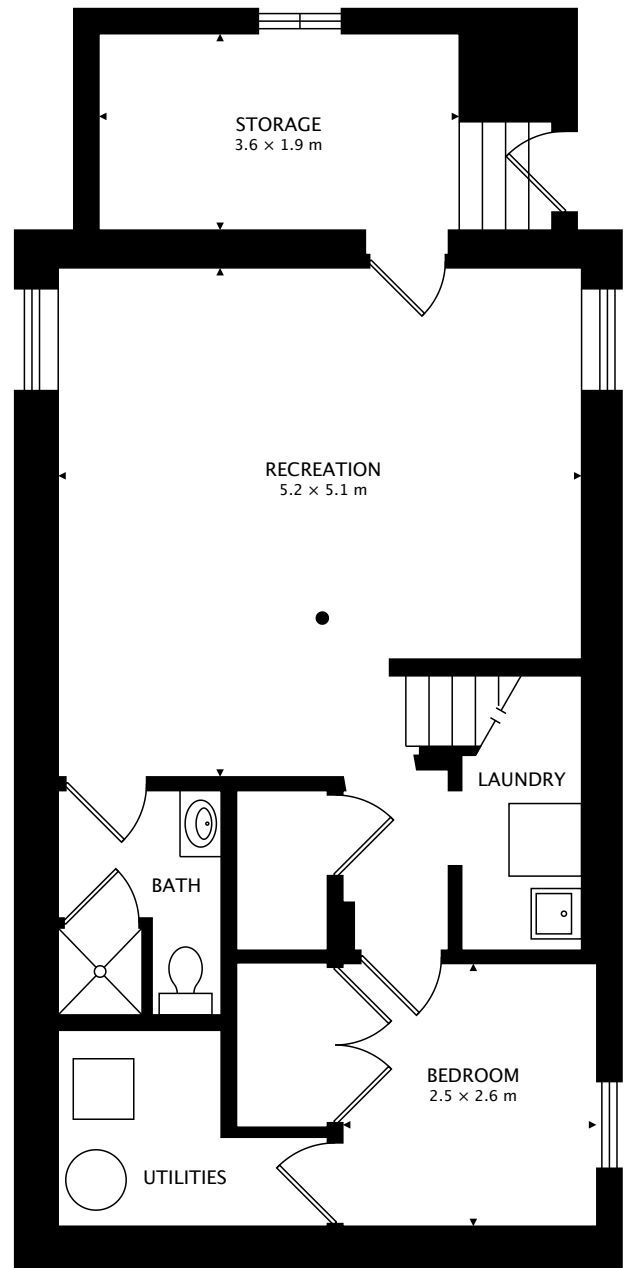


MAIN
64.9 m²



LOWER
60.1 m² BELOW GRADE

TOTAL
64.9 m² + 60.1 m² BELOW GRADE



CAPTURED ON: 9 MAR 2018
DIMENSIONS, AREAS, LAYOUTS AND DETAILS ARE APPROXIMATE
AND SHOULD BE CONSIDERED ILLUSTRATIVE ONLY.