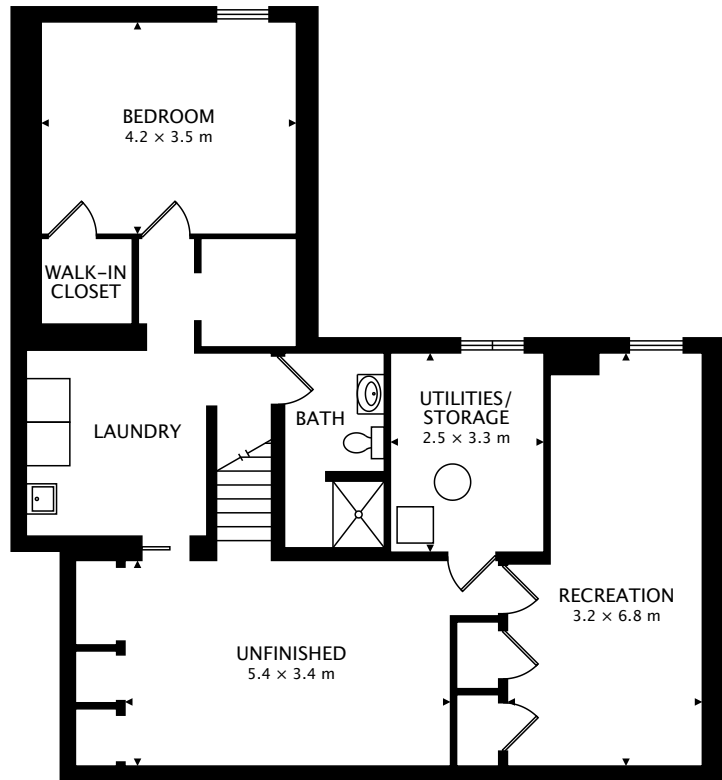


TOTAL  
142.0 m<sup>2</sup> + 109.5 m<sup>2</sup> BELOW GRADE



CAPTURED ON: 15 MAY 2018  
DIMENSIONS, AREAS, LAYOUTS AND DETAILS ARE APPROXIMATE  
AND SHOULD BE CONSIDERED ILLUSTRATIVE ONLY.



LOWER  
109.5 m<sup>2</sup> BELOW GRADE

TOTAL  
142.0 m<sup>2</sup> + 109.5 m<sup>2</sup> BELOW GRADE



CAPTURED ON: 15 MAY 2018  
DIMENSIONS, AREAS, LAYOUTS AND DETAILS ARE APPROXIMATE  
AND SHOULD BE CONSIDERED ILLUSTRATIVE ONLY.