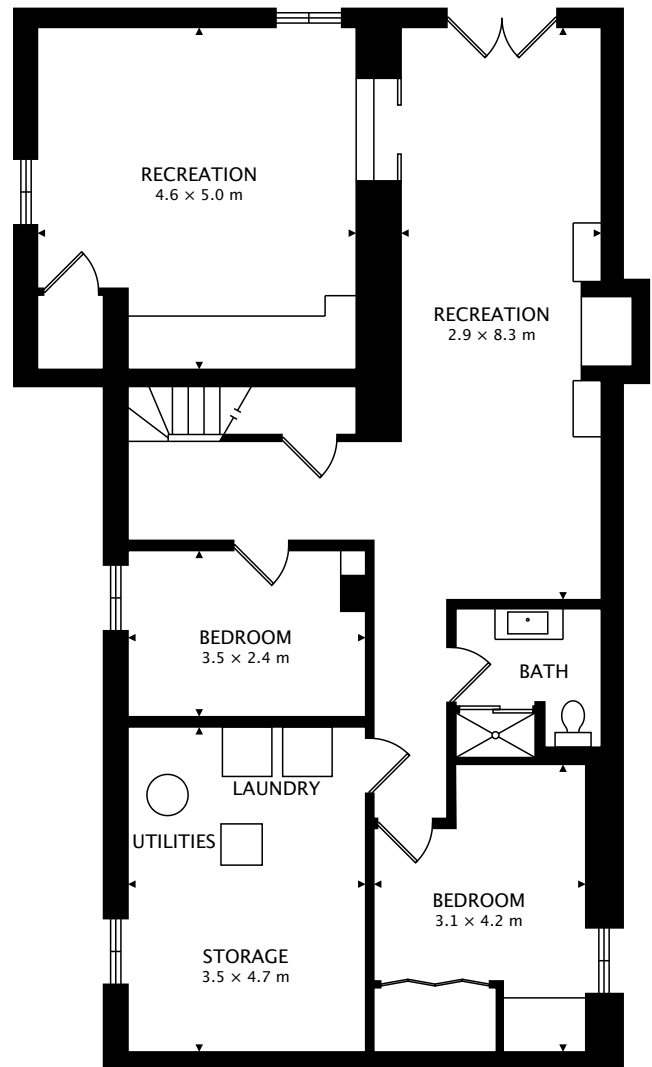


MAIN
123.9 m²



LOWER
121.8 m² BELOW GRADE

TOTAL
123.9 m² + 121.8 m² BELOW GRADE



CAPTURED ON: 3 AUG 2017
DIMENSIONS, AREAS, LAYOUTS AND DETAILS ARE APPROXIMATE
AND SHOULD BE CONSIDERED ILLUSTRATIVE ONLY.