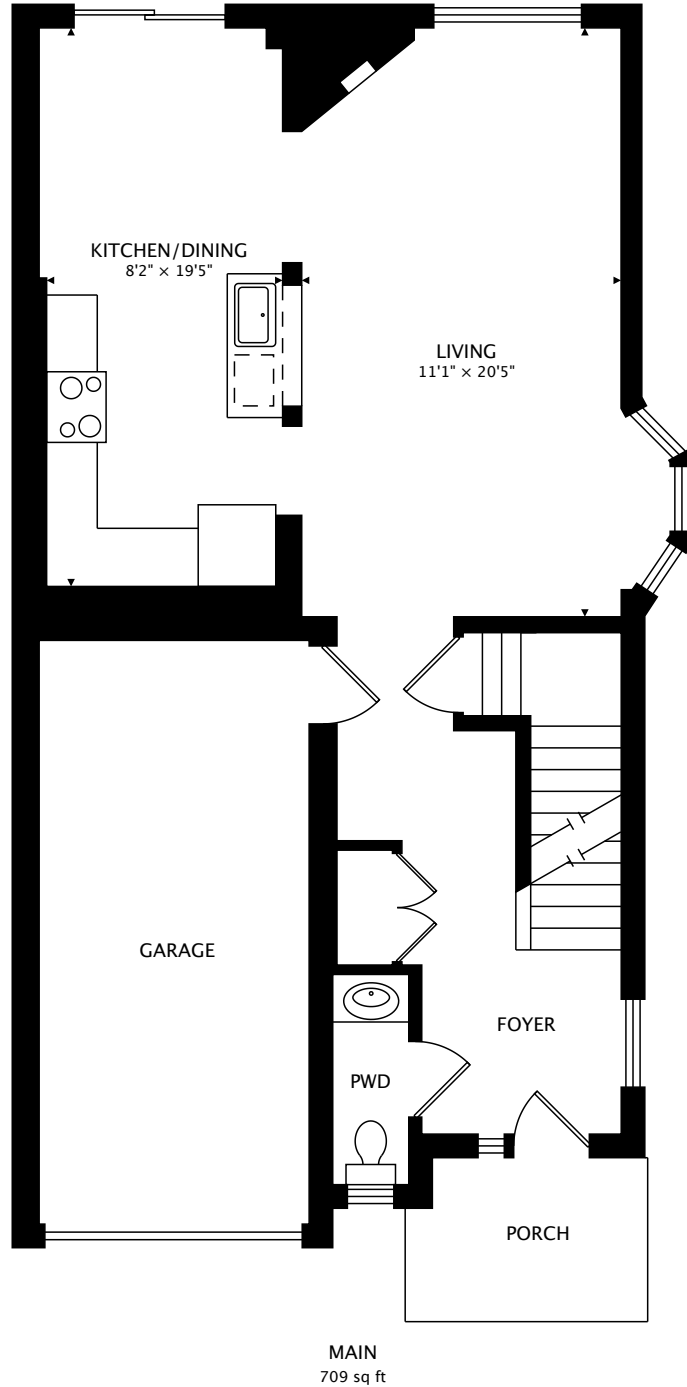


28 DARTMOUTH GATE  
STONEY CREEK

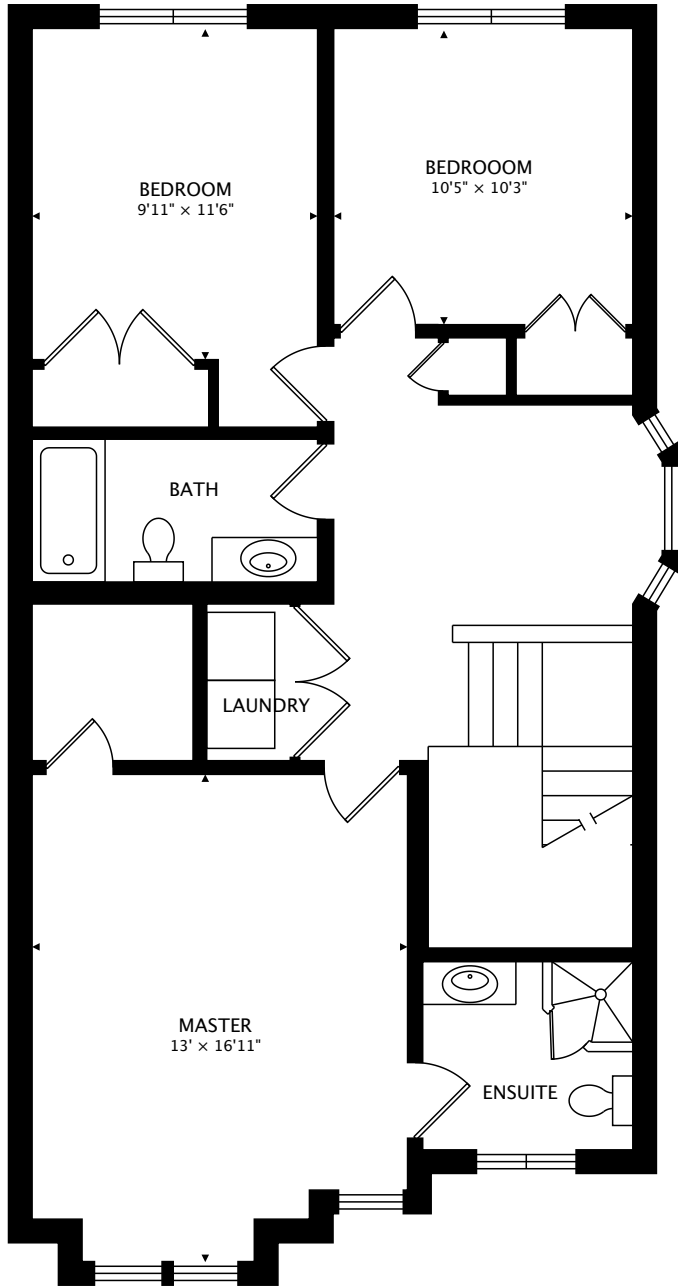


TOTAL  
1670 sq ft + 627 sq ft BELOW GRADE

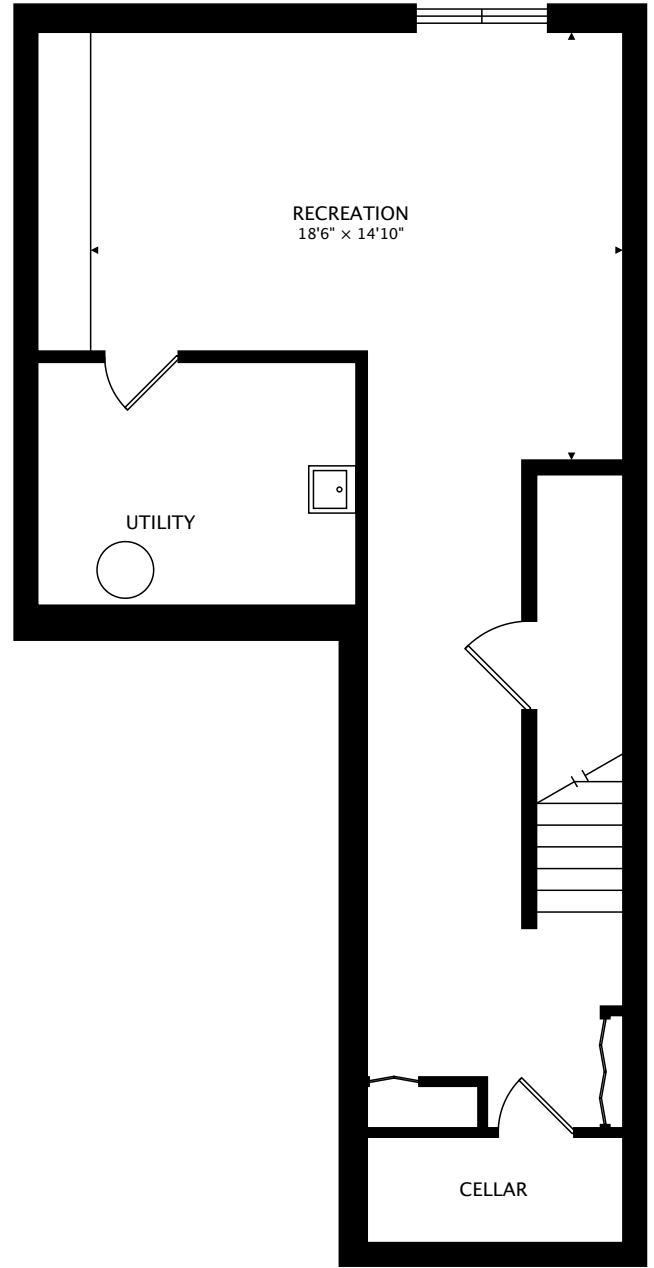


CAPTURED ON: 23 MAR 2017  
DIMENSIONS, AREAS, LAYOUTS AND DETAILS ARE APPROXIMATE  
AND SHOULD BE CONSIDERED ILLUSTRATIVE ONLY.

28 DARTMOUTH GATE  
STONEY CREEK



SECOND  
961 sq ft



LOWER  
627 sq ft BELOW GRADE

TOTAL  
1670 sq ft + 627 sq ft BELOW GRADE



CAPTURED ON: 23 MAR 2017  
DIMENSIONS, AREAS, LAYOUTS AND DETAILS ARE APPROXIMATE  
AND SHOULD BE CONSIDERED ILLUSTRATIVE ONLY.