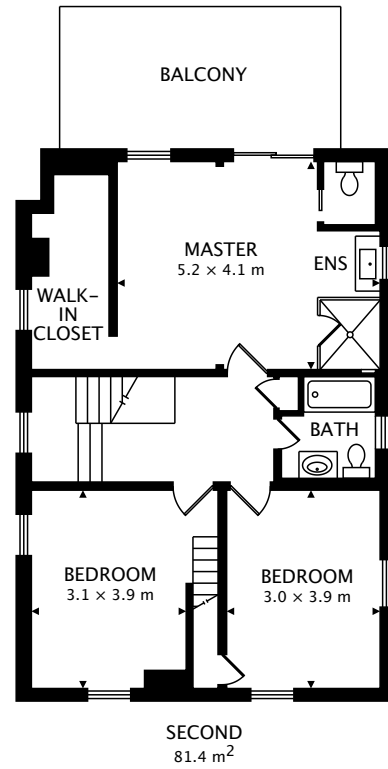
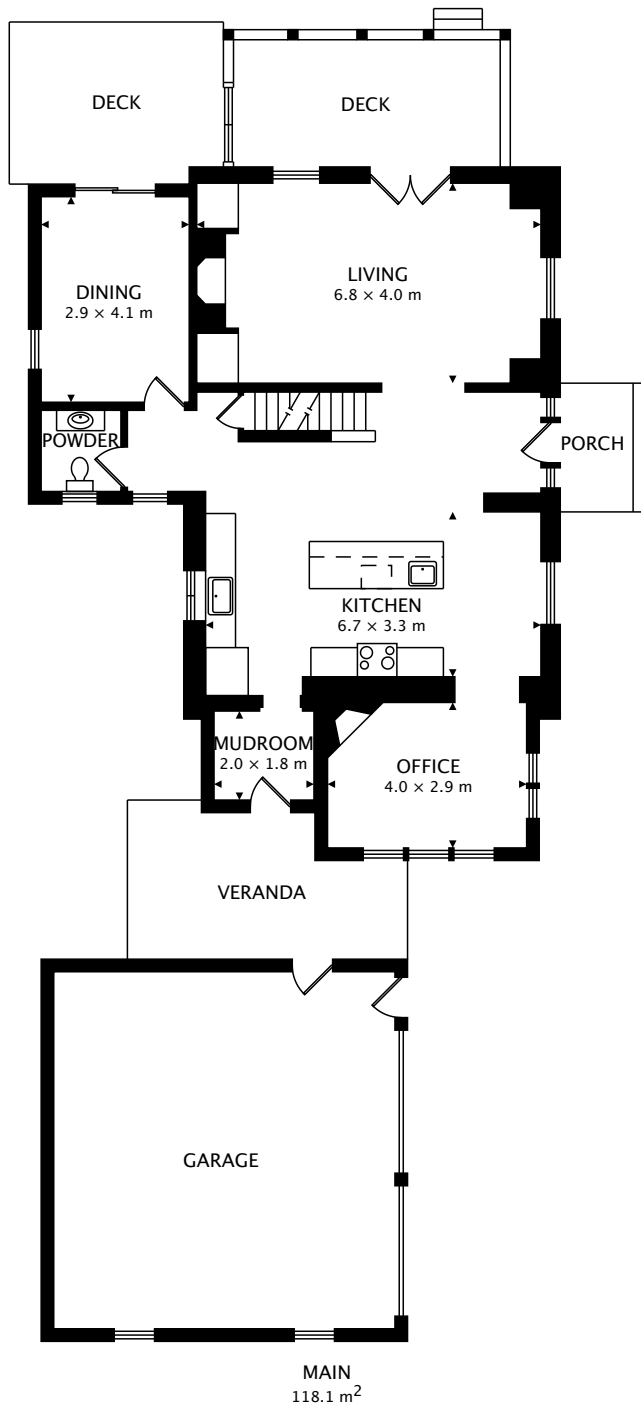


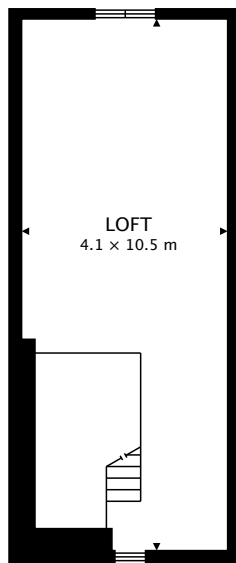
195 LAKE STREET
GRIMSBY, ON L3M 4M1



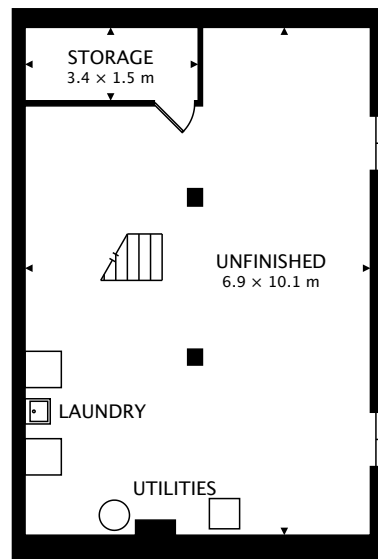
TOTAL
239.8 m² + 79.1 m² BELOW GRADE



CAPTURED ON: 4 DEC 2017
DIMENSIONS, AREAS, LAYOUTS AND DETAILS ARE APPROXIMATE AND SHOULD BE CONSIDERED ILLUSTRATIVE ONLY.



THIRD
40.3 m²



LOWER
79.1 m² BELOW GRADE

TOTAL
239.8 m² + 79.1 m² BELOW GRADE