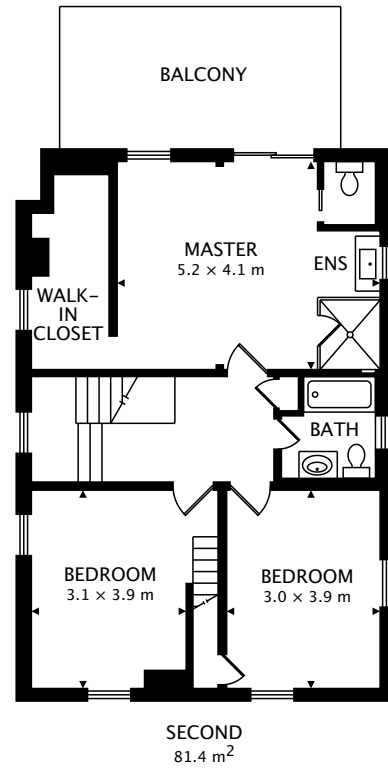
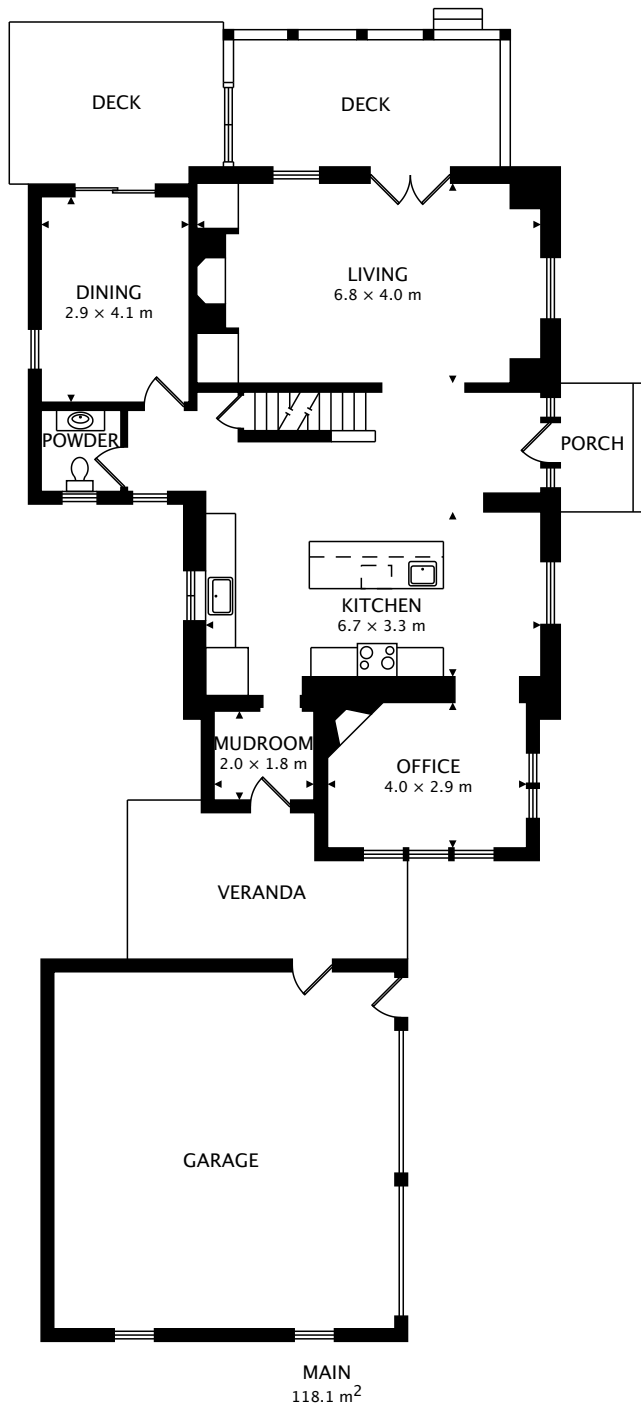


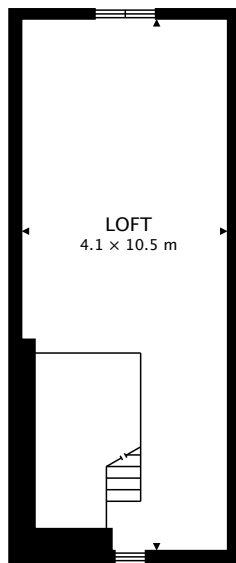
195 LAKE STREET  
GRIMSBY, ON L3M 4M1



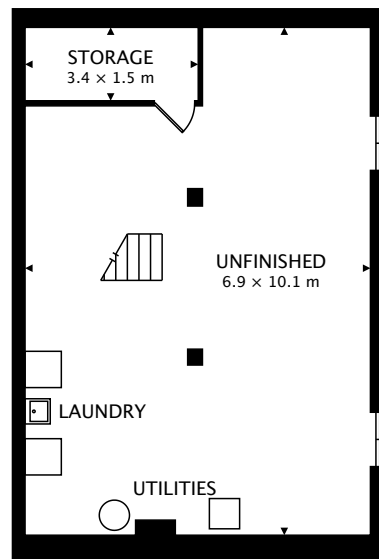
TOTAL  
239.8 m<sup>2</sup> + 79.1 m<sup>2</sup> BELOW GRADE



CAPTURED ON: 4 DEC 2017  
DIMENSIONS, AREAS, LAYOUTS AND DETAILS ARE APPROXIMATE  
AND SHOULD BE CONSIDERED ILLUSTRATIVE ONLY.



THIRD  
40.3 m<sup>2</sup>



LOWER  
79.1 m<sup>2</sup> BELOW GRADE

TOTAL  
239.8 m<sup>2</sup> + 79.1 m<sup>2</sup> BELOW GRADE



CAPTURED ON: 4 DEC 2017  
DIMENSIONS, AREAS, LAYOUTS AND DETAILS ARE APPROXIMATE  
AND SHOULD BE CONSIDERED ILLUSTRATIVE ONLY.