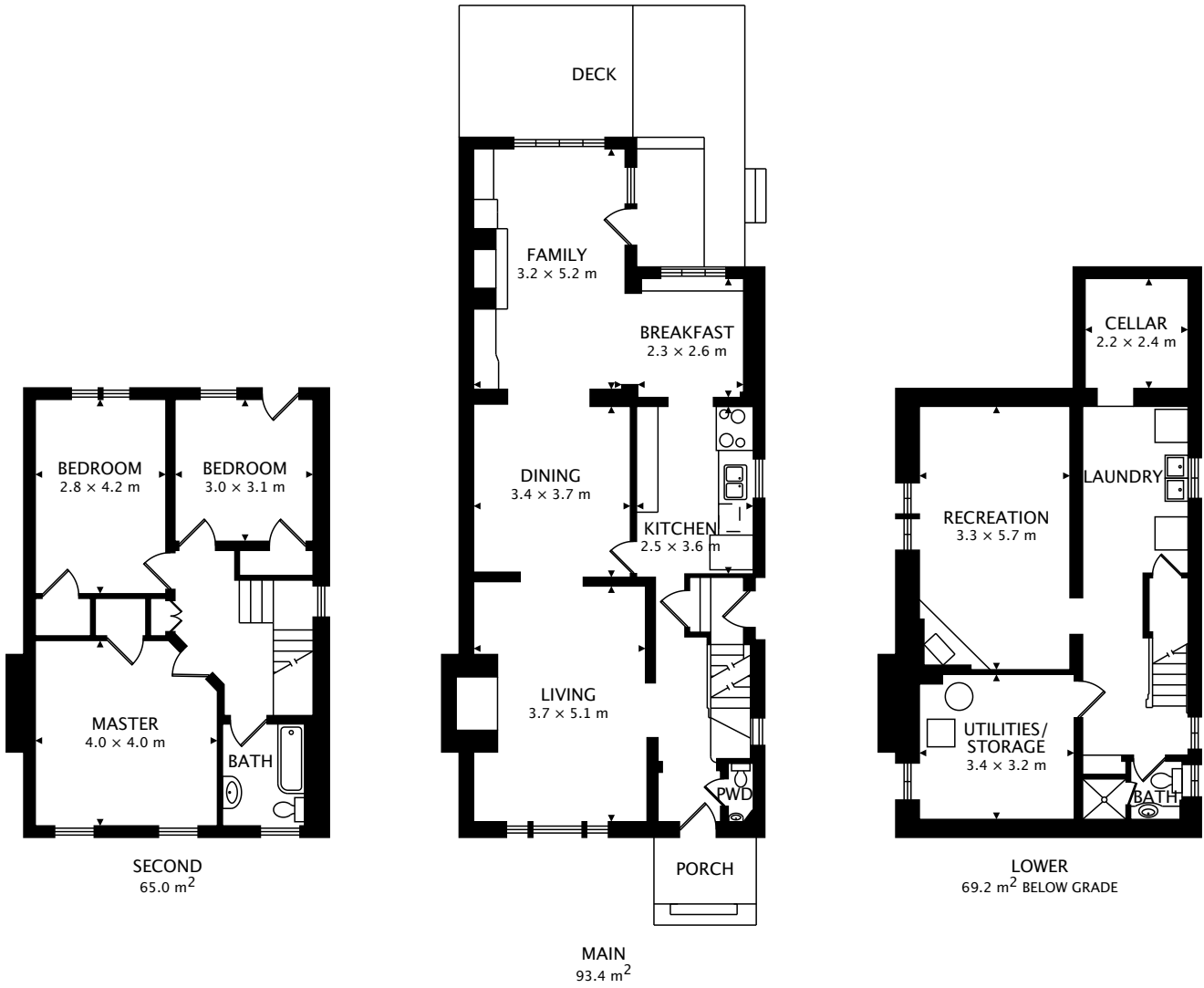


15 WILLINGDON BLVD
 ETOBICOKE, ON M8X 2H1



TOTAL
 158.4 m² + 69.2 m² BELOW GRADE



by FirstFrame Photography
 real.vision | www.firstframephotography.ca/propertyTours



CAPTURED ON: 19 SEP 2017
 DIMENSIONS, AREAS, LAYOUTS AND DETAILS ARE APPROXIMATE
 AND SHOULD BE CONSIDERED ILLUSTRATIVE ONLY.

Angela Balan
 Sales Representative
 Royal LePage Real Estate Services Ltd
 D: 416-509-2557
 angela@angelabalan.com
 www.angelabalan.com