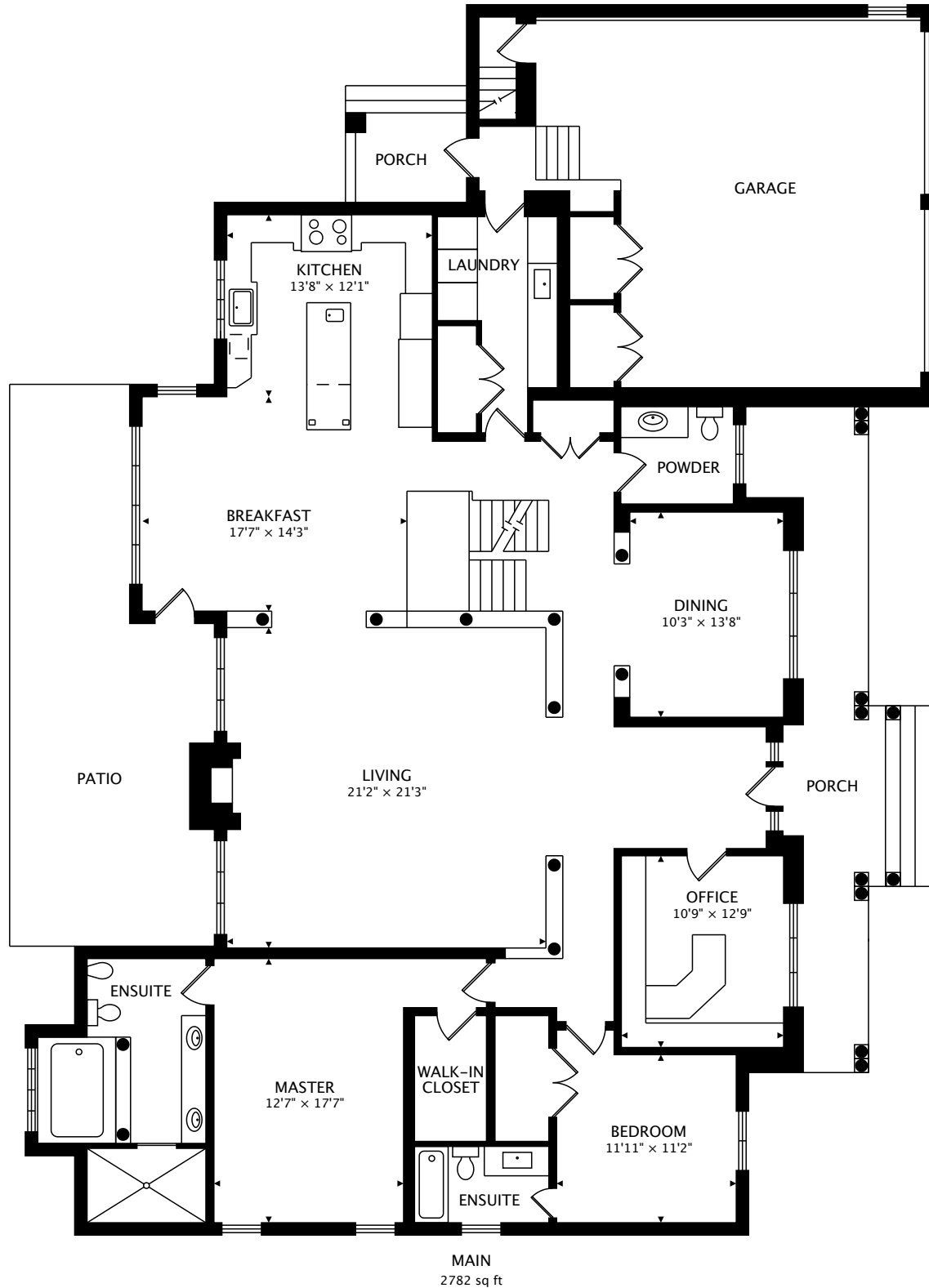


# 11 MAC CARL CRESCENT WHITBY, ON L1R 2T7



**TOTAL**  
6710 sq ft



by FirstFrame Photography  
[real.vision](http://real.vision) | [www.firstframephotography.ca/propertyTours](http://www.firstframephotography.ca/propertyTours)



CAPTURED ON: 27 JUN 2017

DIMENSIONS, AREAS, LAYOUTS AND DETAILS ARE APPROXIMATE  
AND SHOULD BE CONSIDERED ILLUSTRATIVE ONLY.

**Michelle Fraser**

Sales Representative

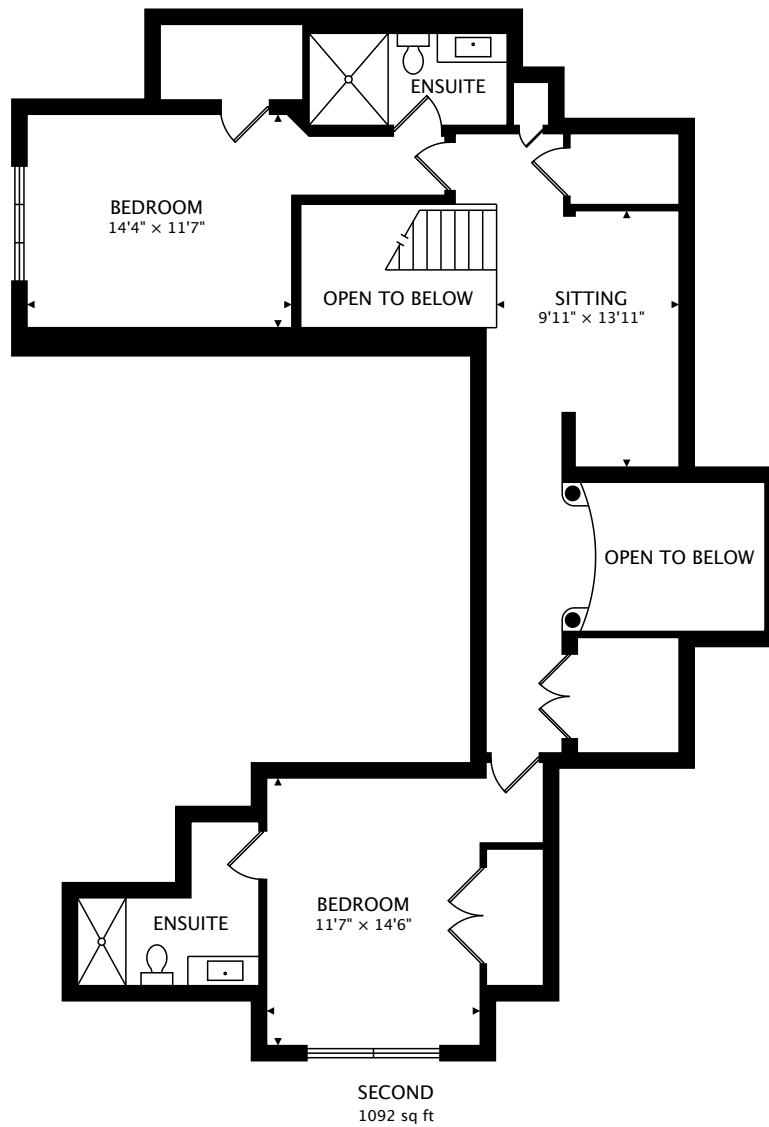
Re/Max Hallmark Fraser Group Realty, Brokerage

D: 416-494-7686 O: 416-494-9839 Ext 4411

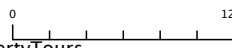
[info@michellefraser.com](mailto:info@michellefraser.com)

<http://www.MichelleFraser.com>

# 11 MAC CARL CRESCENT WHITBY, ON L1R 2T7



SECOND  
1092 sq ft



TOTAL  
6710 sq ft

CAPTURED ON: 27 JUN 2017  
DIMENSIONS, AREAS, LAYOUTS AND DETAILS ARE APPROXIMATE  
AND SHOULD BE CONSIDERED ILLUSTRATIVE ONLY.

# 11 MAC CARL CRESCENT WHITBY, ON L1R 2T7

