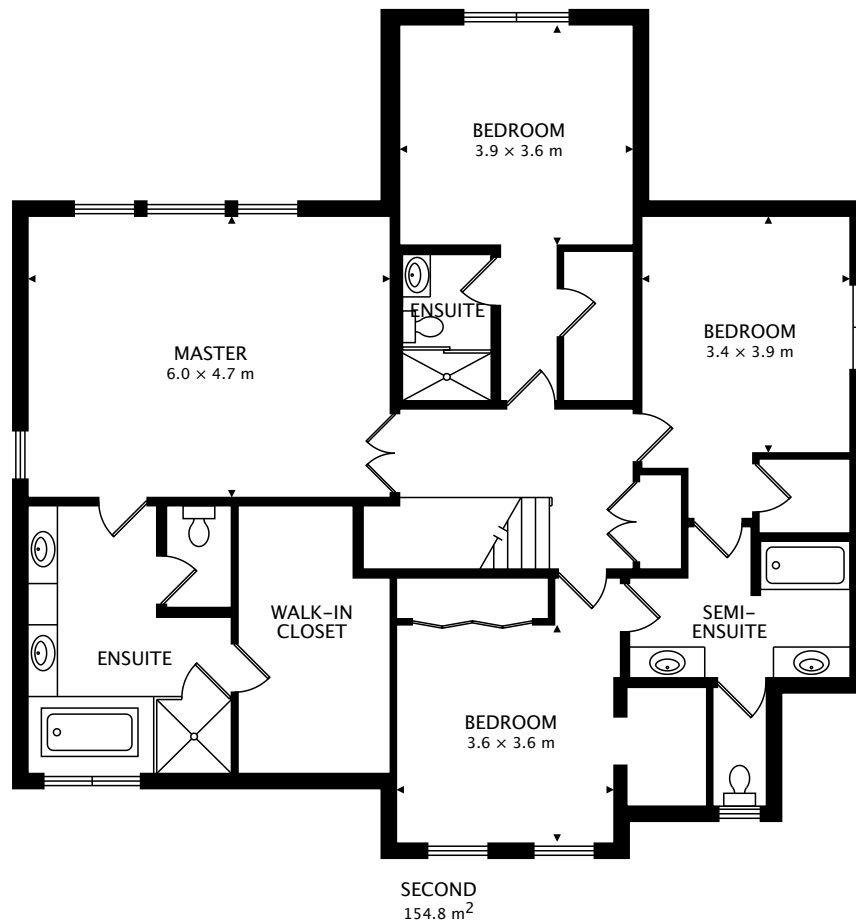


TOTAL
310.8 m² + 109.2 m² BELOW GRADE



CAPTURED ON: 20 JUN 2017

DIMENSIONS, AREAS, LAYOUTS AND DETAILS ARE APPROXIMATE
AND SHOULD BE CONSIDERED ILLUSTRATIVE ONLY.

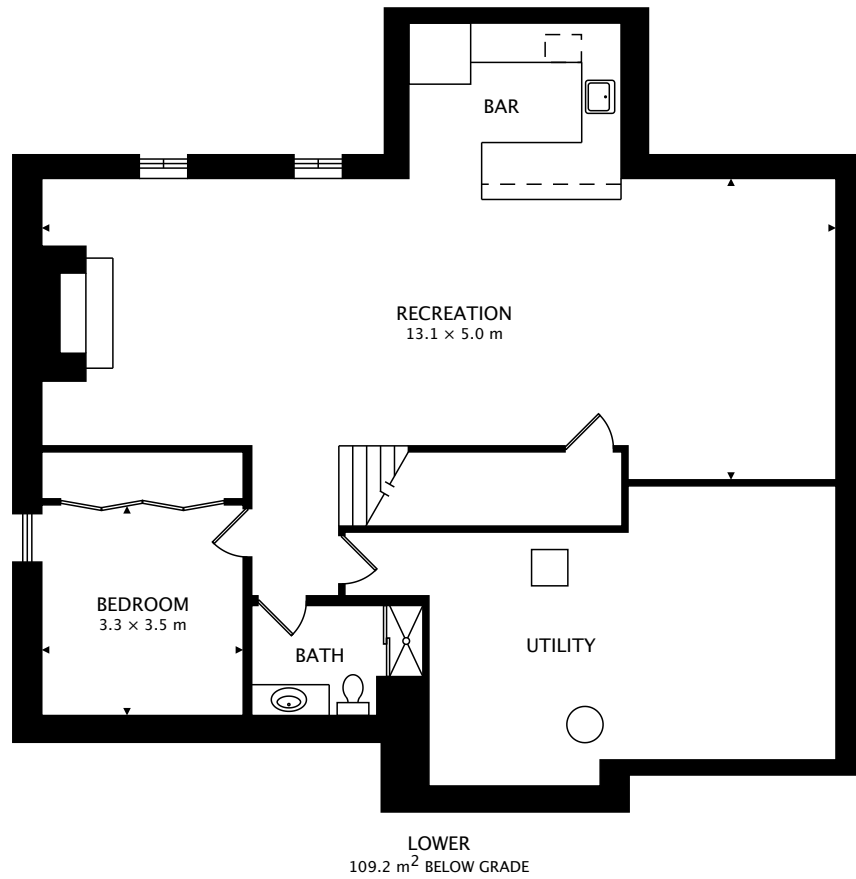


SECOND
154.8 m²

TOTAL
310.8 m² + 109.2 m² BELOW GRADE



CAPTURED ON: 20 JUN 2017
DIMENSIONS, AREAS, LAYOUTS AND DETAILS ARE APPROXIMATE
AND SHOULD BE CONSIDERED ILLUSTRATIVE ONLY.



TOTAL
310.8 m² + 109.2 m² BELOW GRADE



CAPTURED ON: 20 JUN 2017
DIMENSIONS, AREAS, LAYOUTS AND DETAILS ARE APPROXIMATE
AND SHOULD BE CONSIDERED ILLUSTRATIVE ONLY.