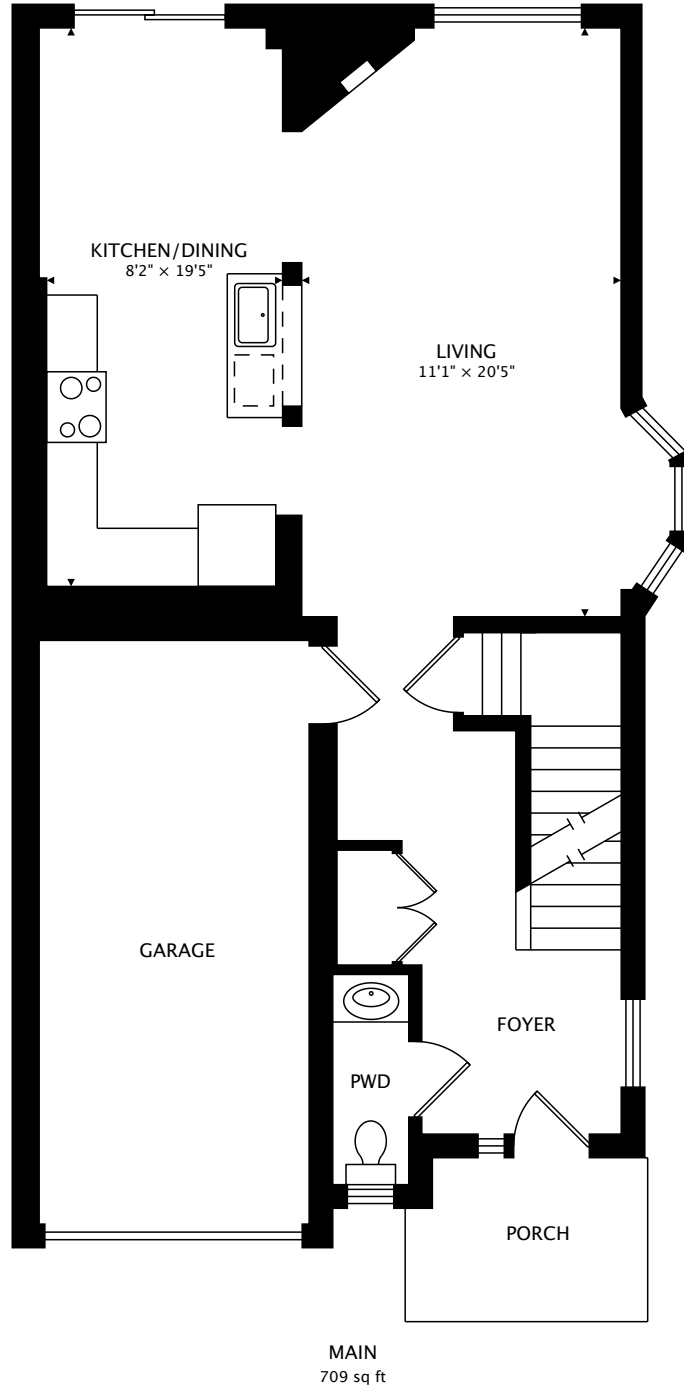


# 28 DARTMOUTH GATE STONEY CREEK

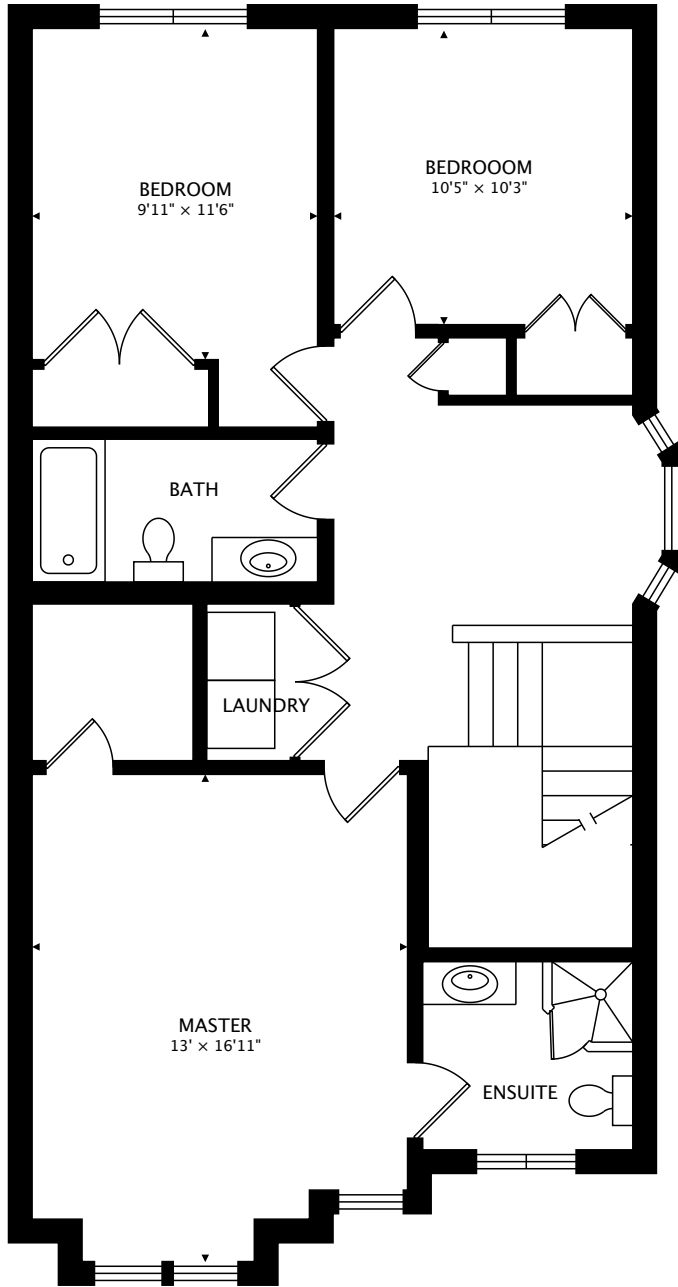


### TOTAL

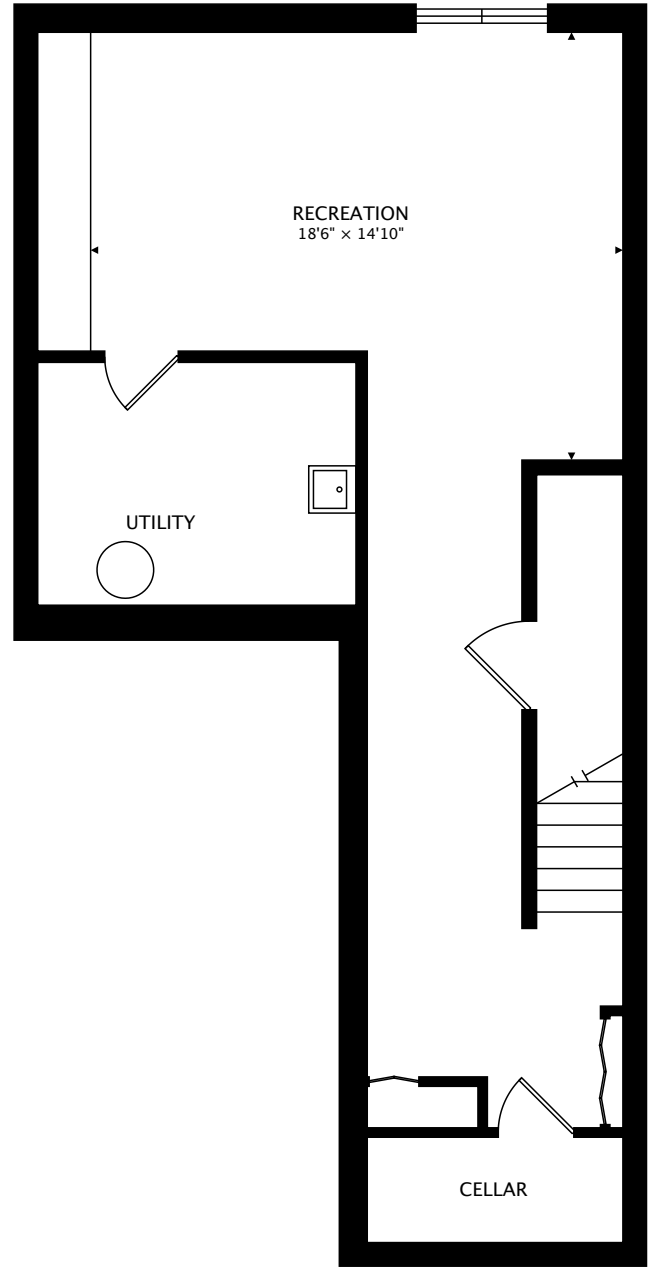
1670 sq ft + 627 sq ft BELOW GRADE



# 28 DARTMOUTH GATE STONEY CREEK



SECOND  
961 sq ft



LOWER  
627 sq ft BELOW GRADE

### TOTAL

1670 sq ft + 627 sq ft BELOW GRADE

