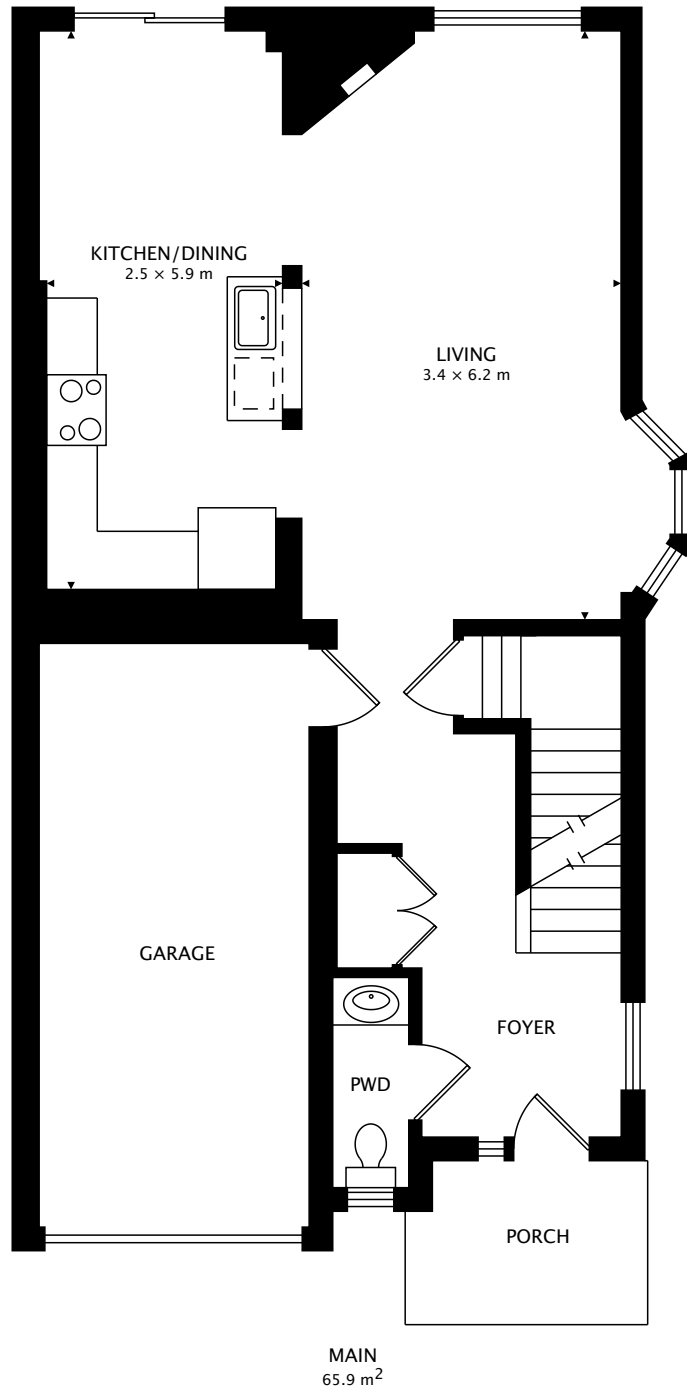


28 DARTMOUTH GATE
STONEY CREEK

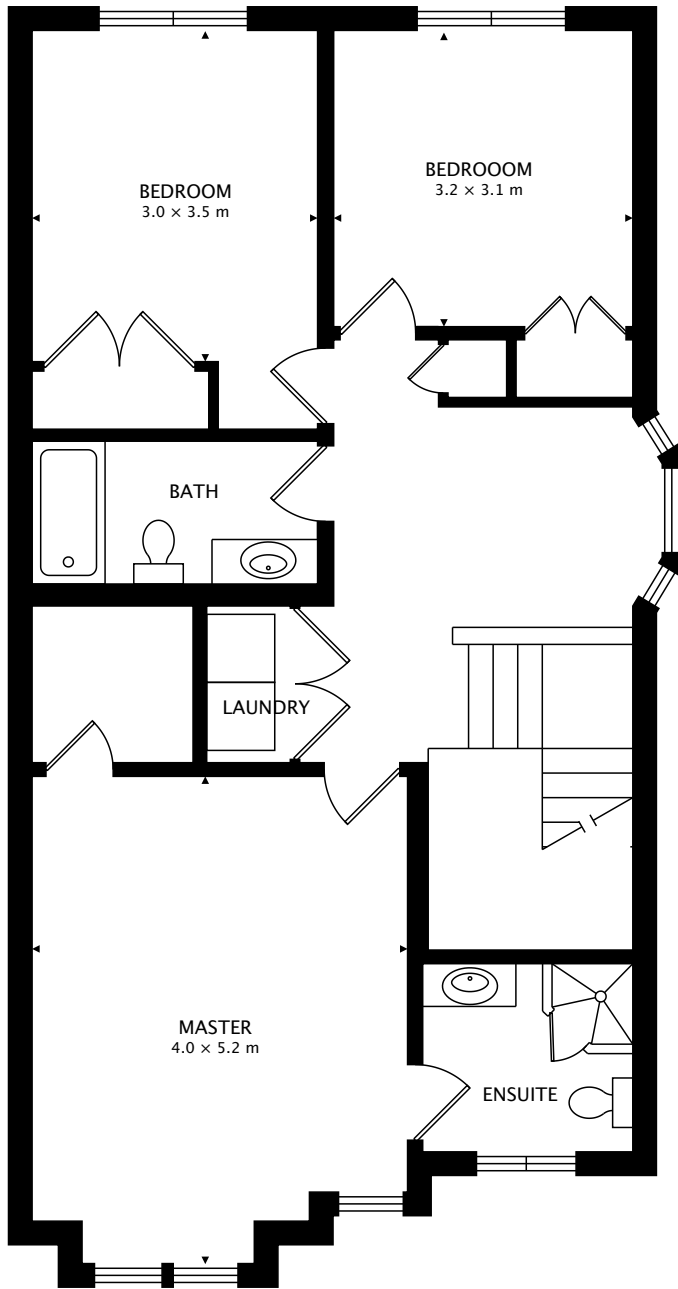


TOTAL
155.2 m² + 58.3 m² BELOW GRADE

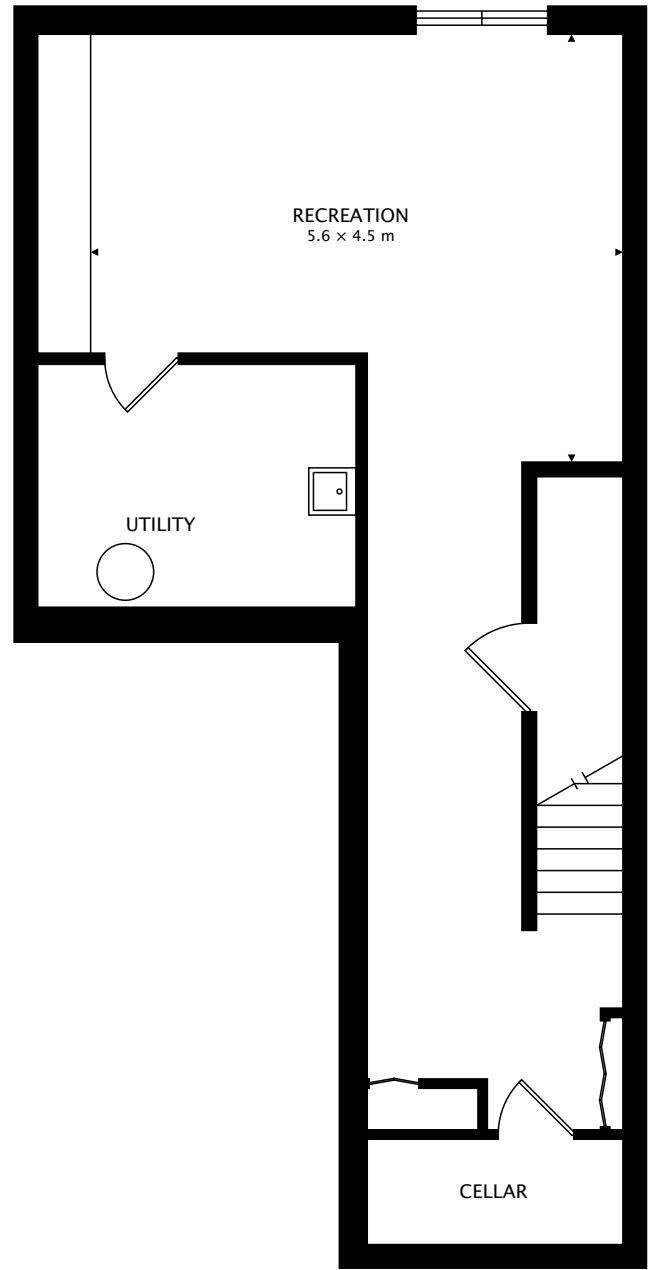


CAPTURED ON: 23 MAR 2017
DIMENSIONS, AREAS, LAYOUTS AND DETAILS ARE APPROXIMATE
AND SHOULD BE CONSIDERED ILLUSTRATIVE ONLY.

28 DARTMOUTH GATE
STONEY CREEK



SECOND
89.3 m²



LOWER
58.3 m² BELOW GRADE

TOTAL
155.2 m² + 58.3 m² BELOW GRADE



CAPTURED ON: 23 MAR 2017
DIMENSIONS, AREAS, LAYOUTS AND DETAILS ARE APPROXIMATE
AND SHOULD BE CONSIDERED ILLUSTRATIVE ONLY.