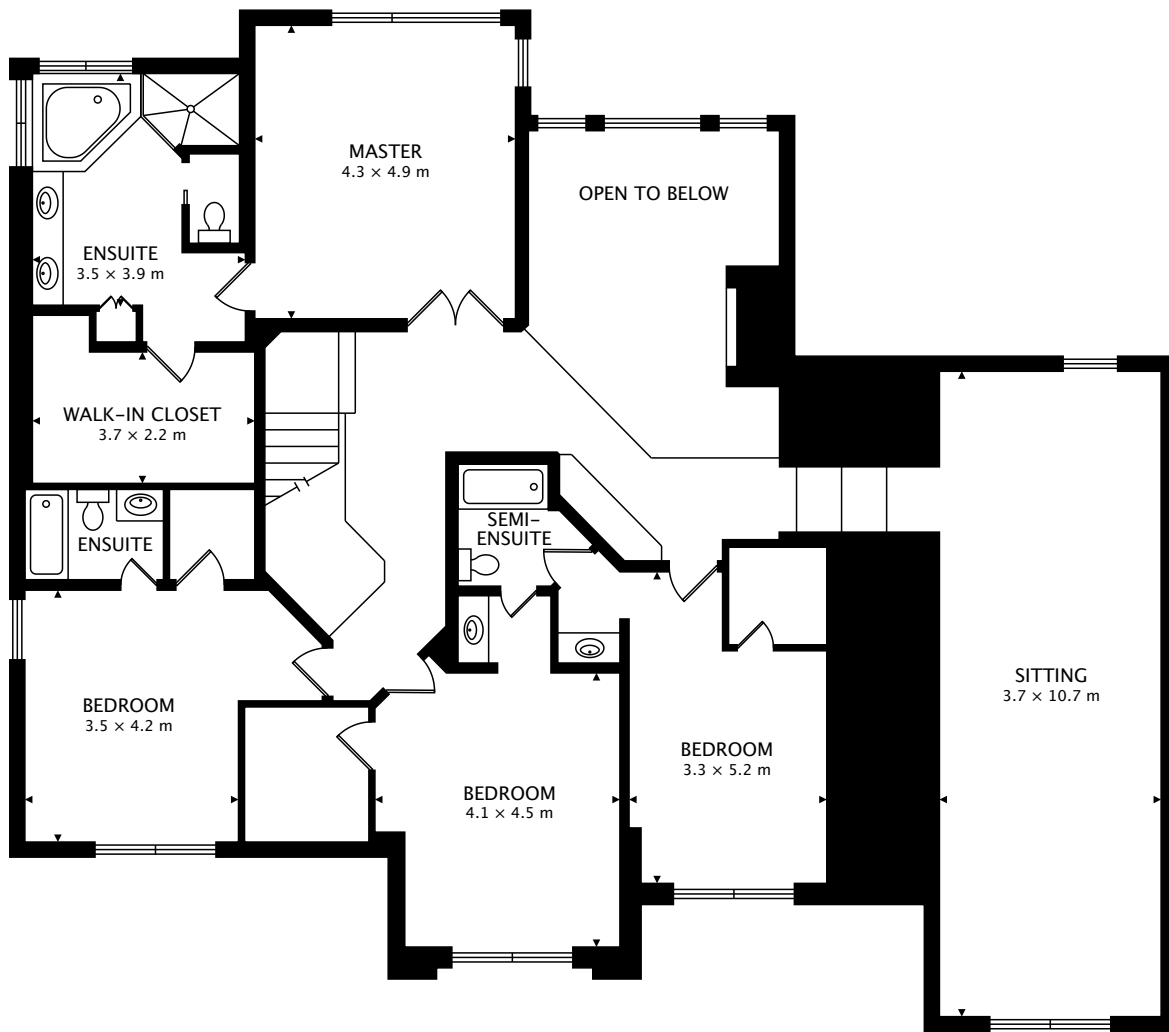


TOTAL
416.8 m² + 132.0 m² BELOW GRADE



CAPTURED ON: 23 AUG 2017

DIMENSIONS, AREAS, LAYOUTS AND DETAILS ARE APPROXIMATE
AND SHOULD BE CONSIDERED ILLUSTRATIVE ONLY.



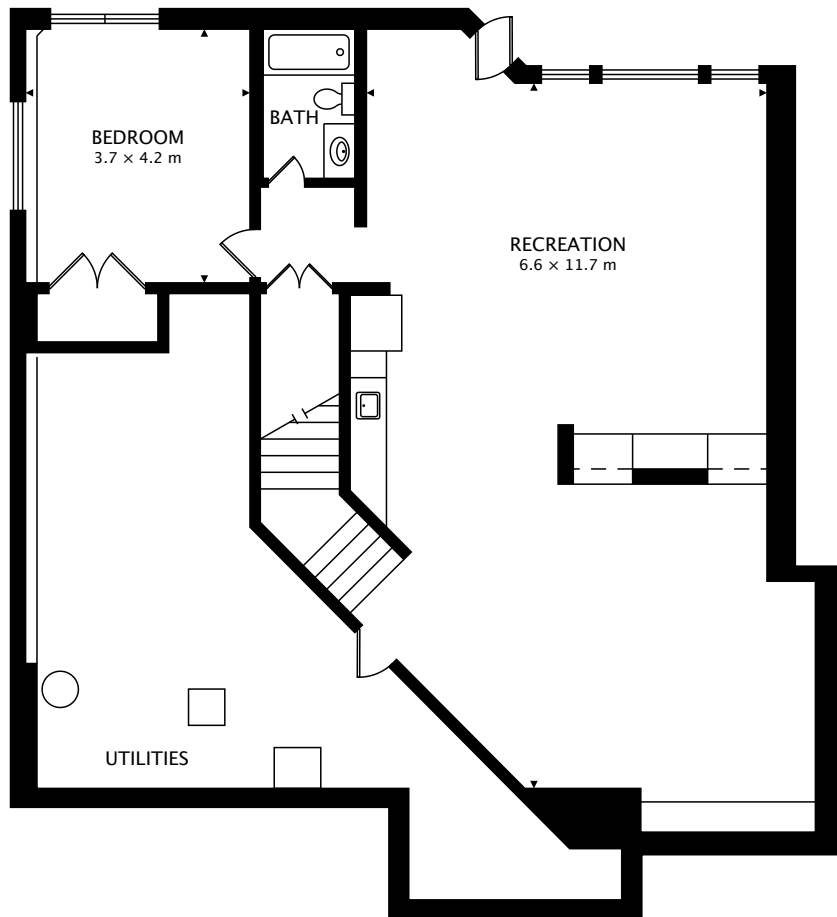
SECOND
217.6 m²

TOTAL
416.8 m² + 132.0 m² BELOW GRADE



CAPTURED ON: 23 AUG 2017

DIMENSIONS, AREAS, LAYOUTS AND DETAILS ARE APPROXIMATE
AND SHOULD BE CONSIDERED ILLUSTRATIVE ONLY.



LOWER
132.0 m² BELOW GRADE

TOTAL
416.8 m² + 132.0 m² BELOW GRADE



CAPTURED ON: 23 AUG 2017
DIMENSIONS, AREAS, LAYOUTS AND DETAILS ARE APPROXIMATE
AND SHOULD BE CONSIDERED ILLUSTRATIVE ONLY.