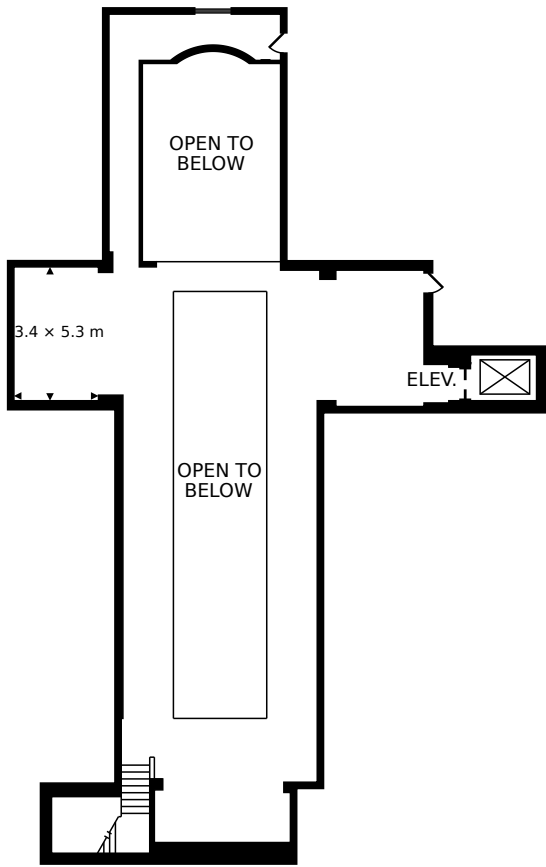
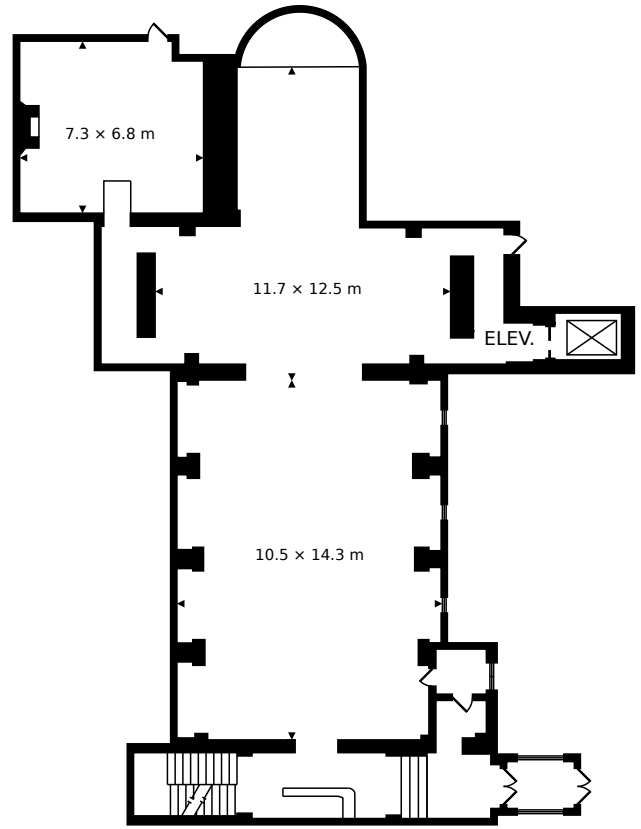


THE MUSEUM OF RUSSIAN ART

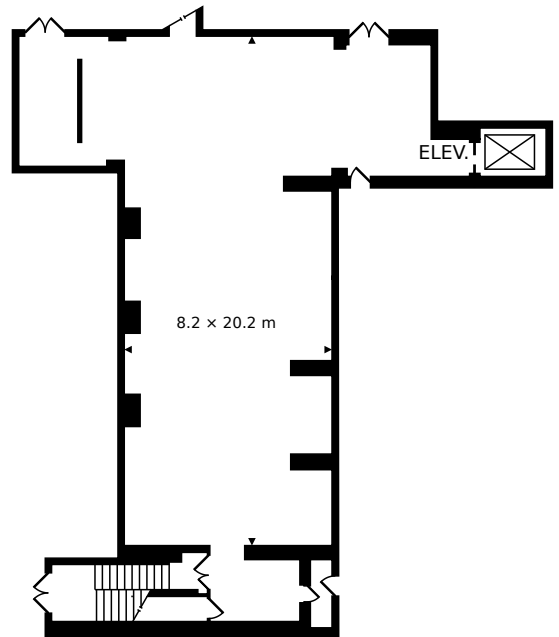
5500 STEVENS AVE



SECOND
232.4 m²



MAIN
443.1 m²



LOWER
273.9 m²

TOTAL
949.4 m²



CAPTURED ON: 19 JAN 2017
DIMENSIONS, AREAS, LAYOUTS AND DETAILS ARE APPROXIMATE
AND SHOULD BE CONSIDERED ILLUSTRATIVE ONLY.